



SKRINEX
P O L S K A

ISO 9001:2015

ISO 14001:2015

ISO 45001:2024

SKRINEX-PL.COM



OUR COMPANY HAS EXPERIENCE WORKING ON ARCELORMITTAL SITES. FROM AUGUST 2023 TO THE PRESENT, VARIOUS TASKS HAVE BEEN CARRIED OUT AT THE ARCELORMITTAL FOS-SUR-MER SITE AS PART OF THE FOUR POCHÉ PROJECT:

-CLADDING OF MHS SUPPORTING STRUCTURE ASSEMBLY

CLADDING WORK ON THE SUPPORTING STRUCTURES HAS BEEN COMPLETED, COVERING A TOTAL AREA OF 2,950 SQUARE METERS.





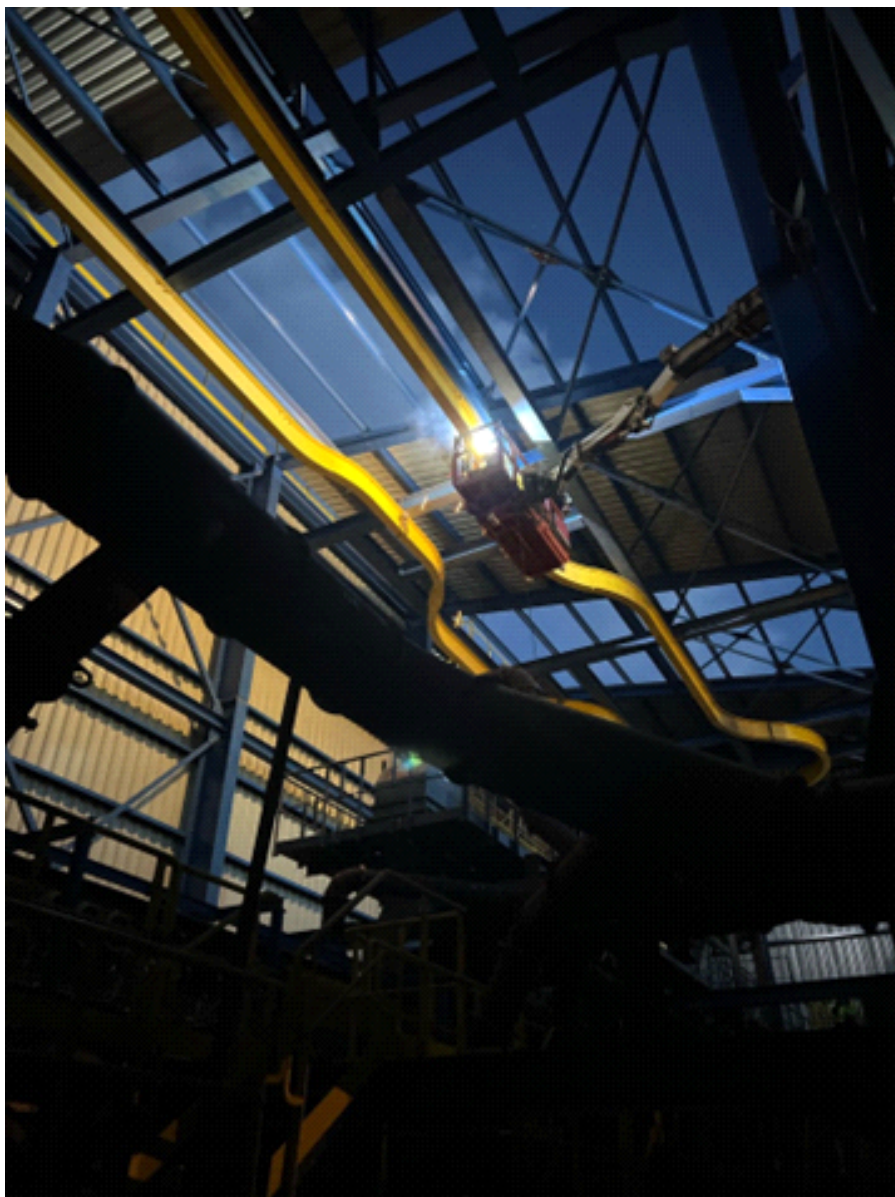
WORK FOR INSTALLATION COILS STRUCTURE ERECTION



PRE-ASSEMBLY OF GAS DUCTS



INSTALLATION OF A MONORAIL FOR HOIST ASSEMBLY



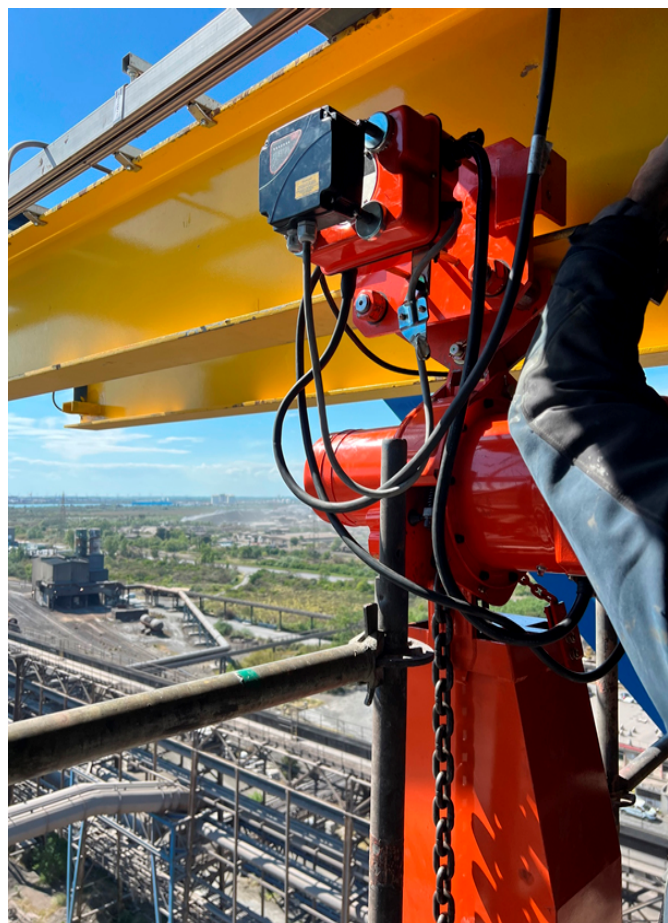
INSTALLATION OF HEAT SHIELDS OVER STEEL CARRIERS IN ZONE 2



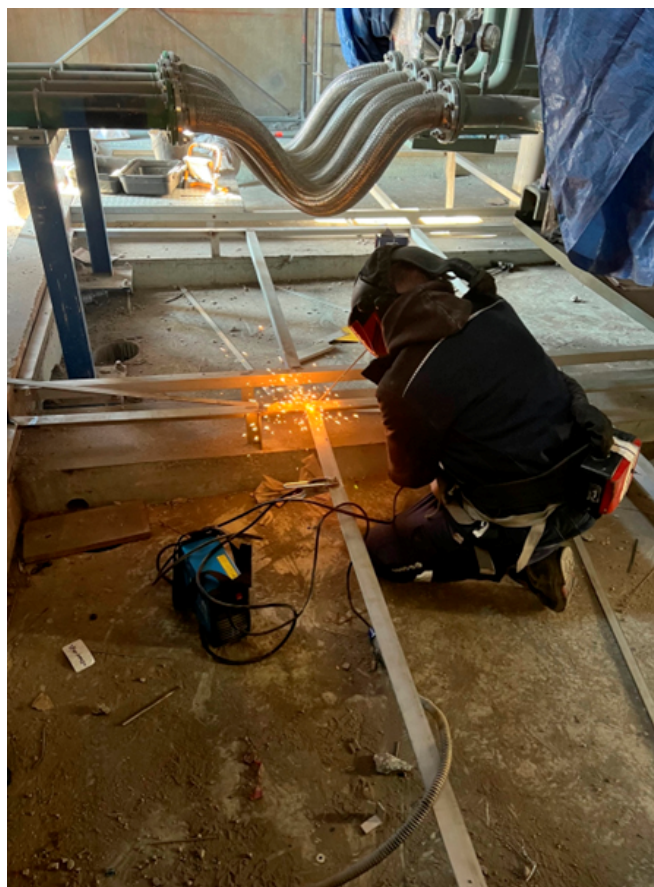
EMERGENCY REPAIR WORK TO ELIMINATE A LEAK IN THE COOLING SYSTEM OF THE NORTH COVER OF THE LADLE FURNACE



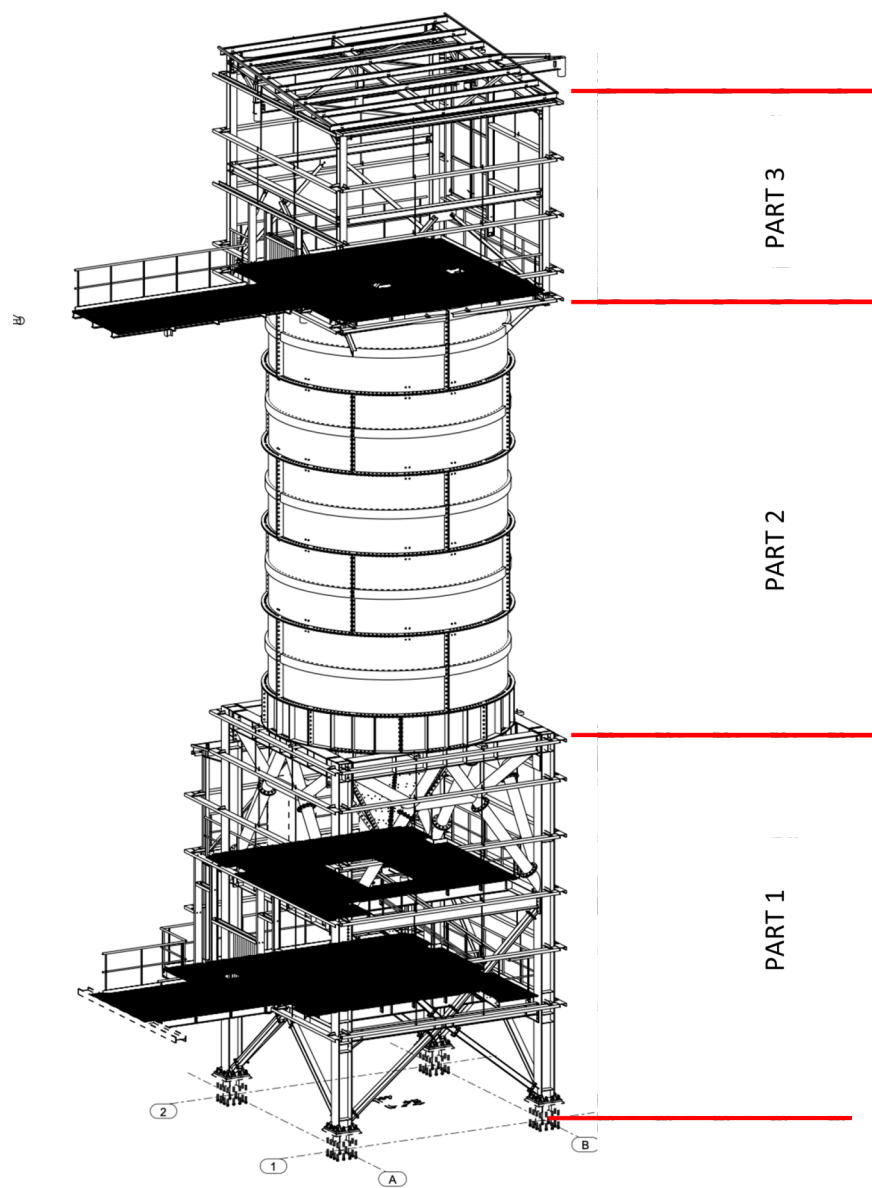
FINAL WORKS ON ARCELOR MITTAL FOS SUR MER FRANCE



FINAL WORKS ON ARCELOR MITTAL FOS SUR MER FRANCE



ARCELOR MITTAL BELVAL: GENERAL ASSEMBLY HBI SILO



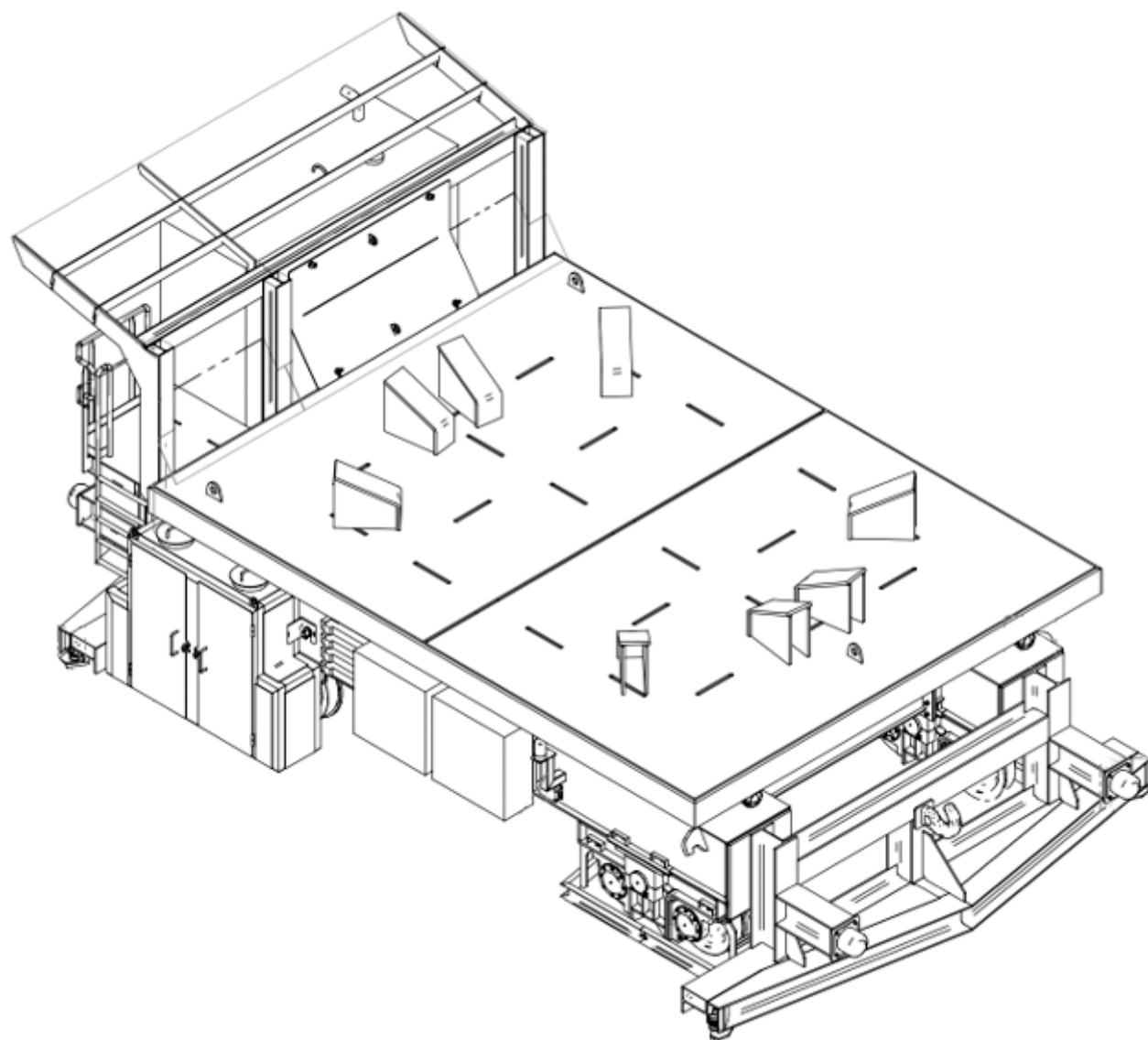
THE HEIGHT OF THE SILO IS 27.7 M.
PART 1 – THE SUPPORT STRUCTURE,
PART 2 – THE HOPPER,
PART 3 – THE TOP PLATFORM.



ARCELOR MITTAL BELVAL: GENERAL ASSEMBLY HBI SILO



ASSEMBLY OF THE SCRAP BUCKET TRANSFER CAR FOR THE MELTSHOP

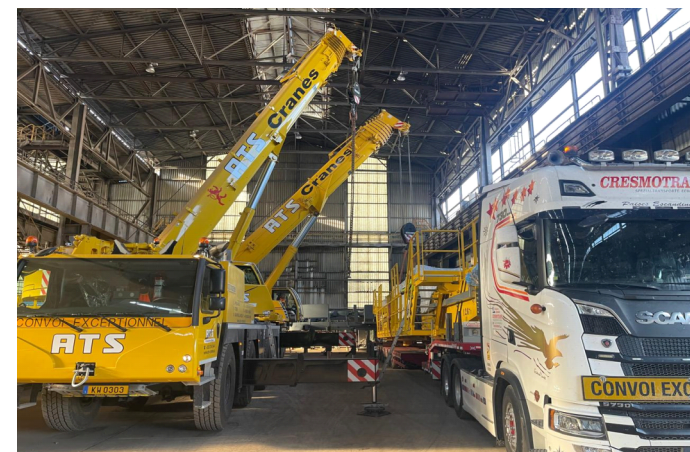
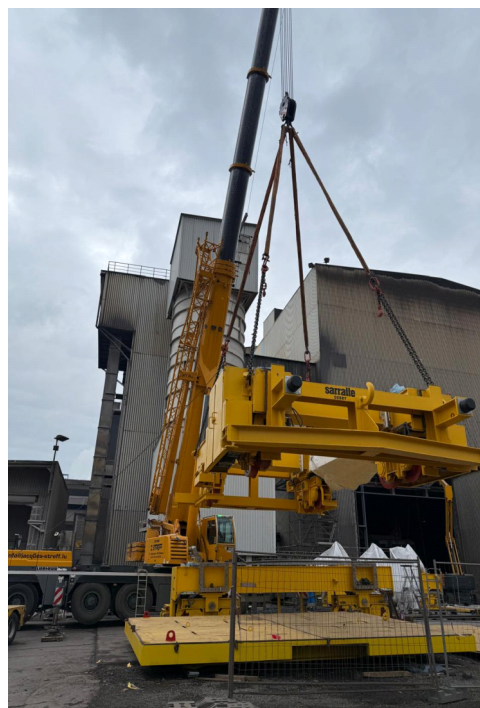


**TOTAL WEIGHT OF METAL
STRUCTURES: 59 130 KG.**

**OVERALL DIMENSIONS:
10 931 X 6041 X 4560 MM.**

RAIL GAUGE: 3800 MM.

ASSEMBLY OF THE SCRAP BUCKET TRANSFER CAR FOR THE MELTSHOP



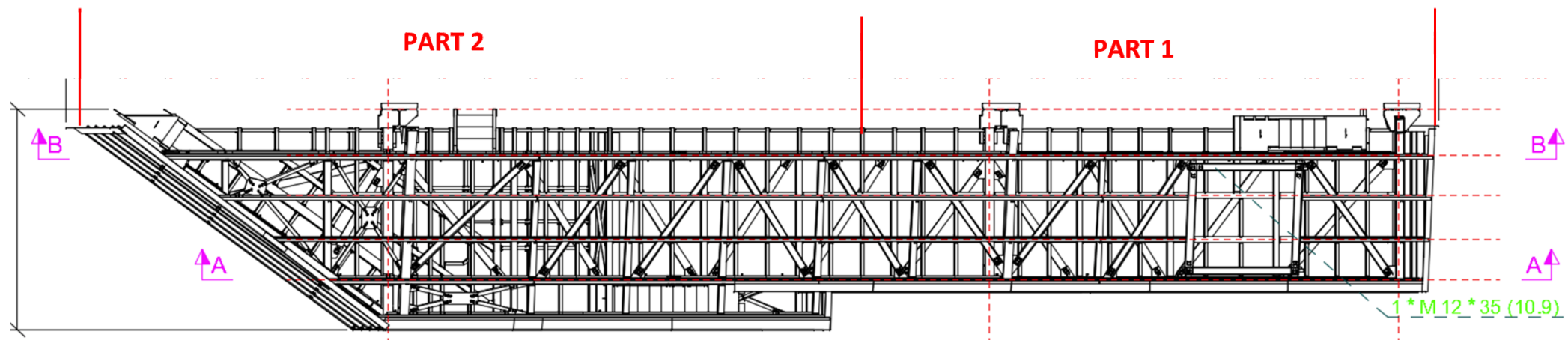
EHF M15- FES COMBUSTION CHAMBER LOWER HALF ASSEMBLING AND INSTALLATION



ASSEMBLY OF THE HYDRAULIC CYLINDER FOR LIFTING THE CENTRAL CONSOLE (PORTAL) COVER AND THE COLUMN WITH THE HYDRAULIC CYLINDER



ASSEMBLY MHS-SUPPORTING STRUCTURE (GALLERY NB CO3)



PARAMETERS OF PART 1:

- LENGTH: 18,792 MM
- WIDTH: 4,207 MM
- HEIGHT: 4,000 MM
- WEIGHT: 20 TONS



PARAMETERS OF PART 2:

- LENGTH: 15,500 MM
- WIDTH: 5,500 MM
- HEIGHT: 6,000 MM
- WEIGHT: 20 TONS



COMBUSTION CHAMBER – OUTLET WATER COOLED DUCTS



THE SUPPORT FRAME FOR THE BOTTOM SHELL, MEASURING 11 X 9 METRES WITH A HEIGHT OF 5 METRES, WAS ASSEMBLED AND INSTALLED IN ITS DESIGNATED POSITION. THIS FRAME IS DESIGNED TO BE MOUNTED ON THE SHELL TRANSFER CAR AND SERVES AS THE TRANSPORT BASE FOR THE BOTTOM SHELL UNIT



DISMANTLING OF THE BOTTOM SHELL FROM THE OLD FURNACE. THE BOTTOM SHELL, WITH A TOTAL WEIGHT OF 162.5 TONNES INCLUDING REFRACTORY LINING, WAS DISMANTLED FROM THE OLD FURNACE. THE OPERATION WAS CARRIED OUT SIMULTANEOUSLY USING TWO 300-TONNE CRANES, ENSURING SAFE AND PRECISE HANDLING OF THE HEAVY STRUCTURE DURING REMOVAL.



LOADING AND TRANSPORTATION OF THE FURNACE ELECTRODE LIFTING COLUMN









ERECTION TO THE VERTICAL POSITION AND INSTALLATION OF THE FURNACE PORTAL





INSTALLATION OF THE REFRACTORY PLATFORM



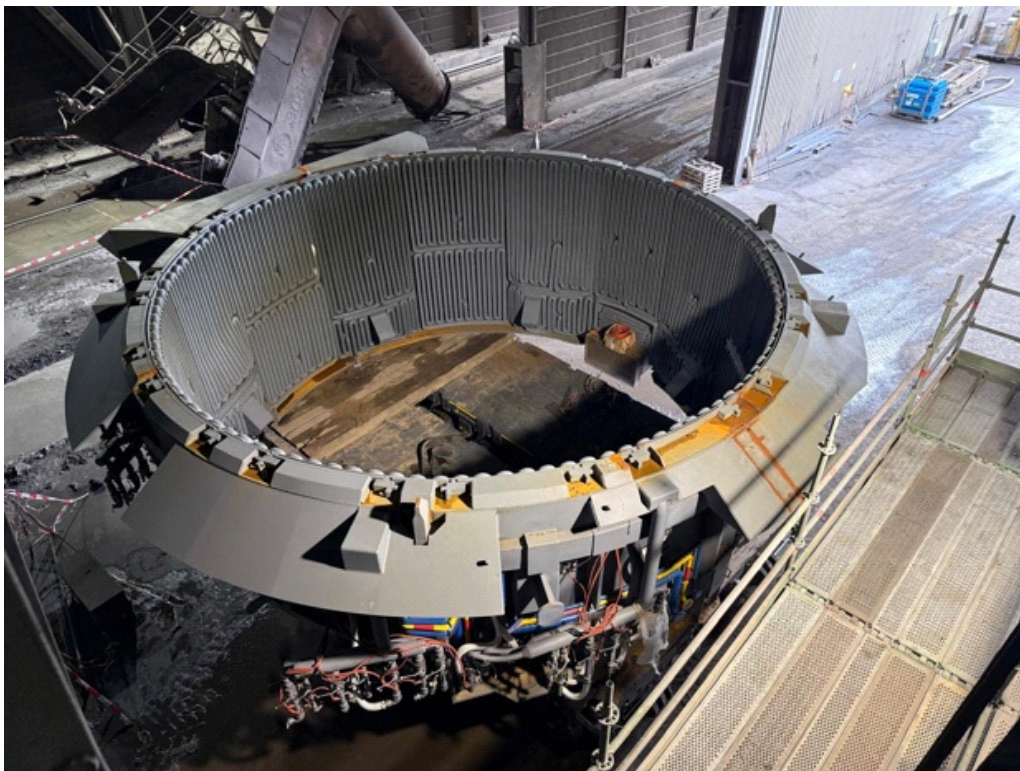


DISMANTLING OF THE FURNACE SHELL

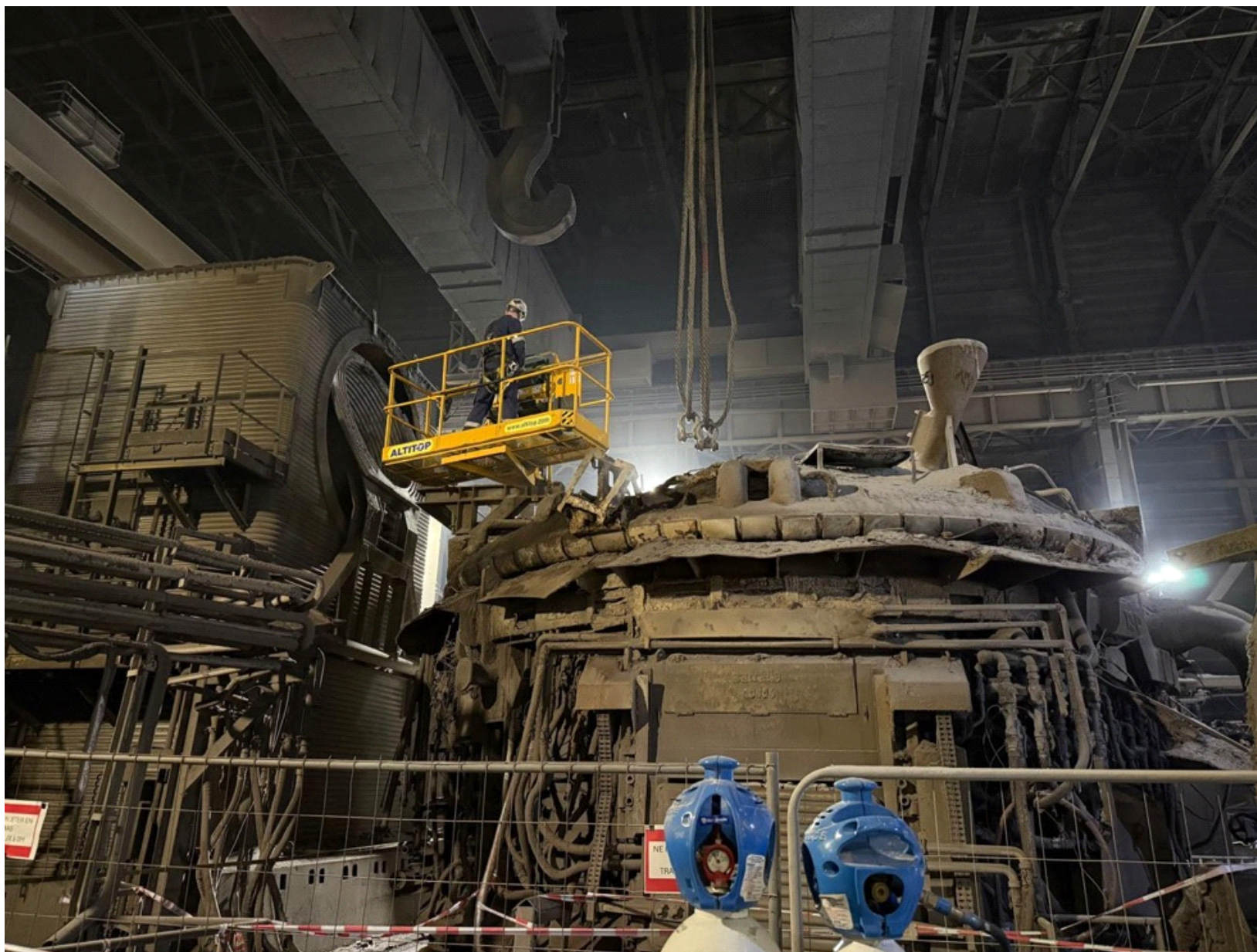


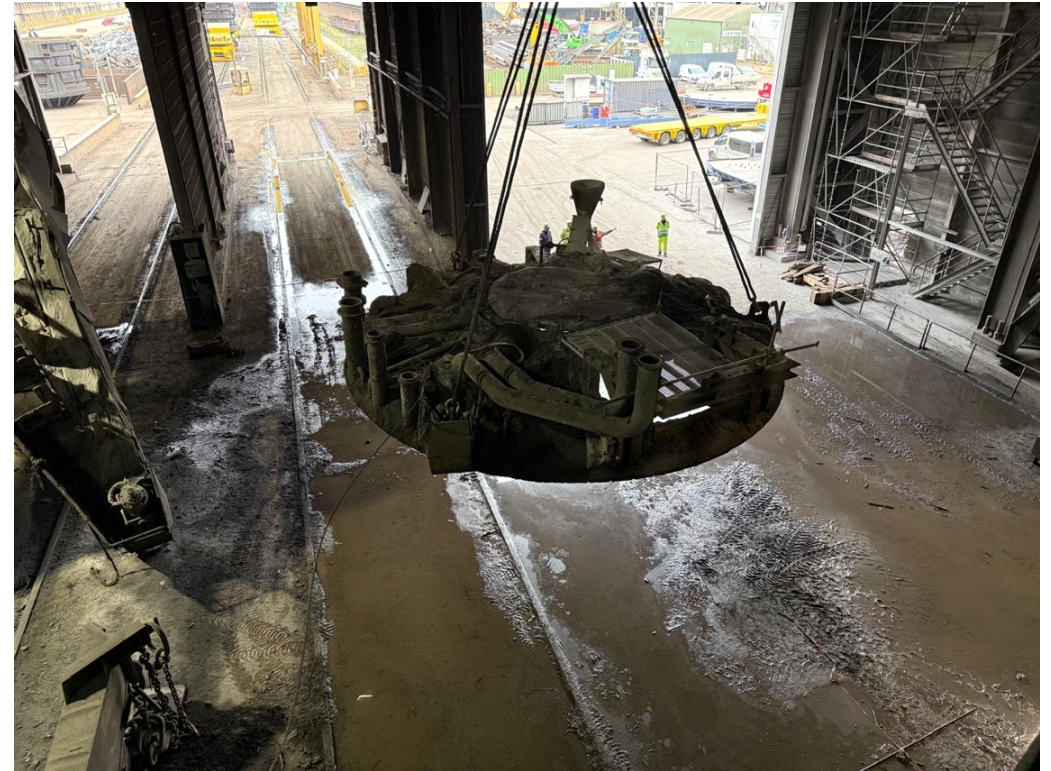
TRANSPORT AND INSTALLATION OF THE FURNACE SHELL



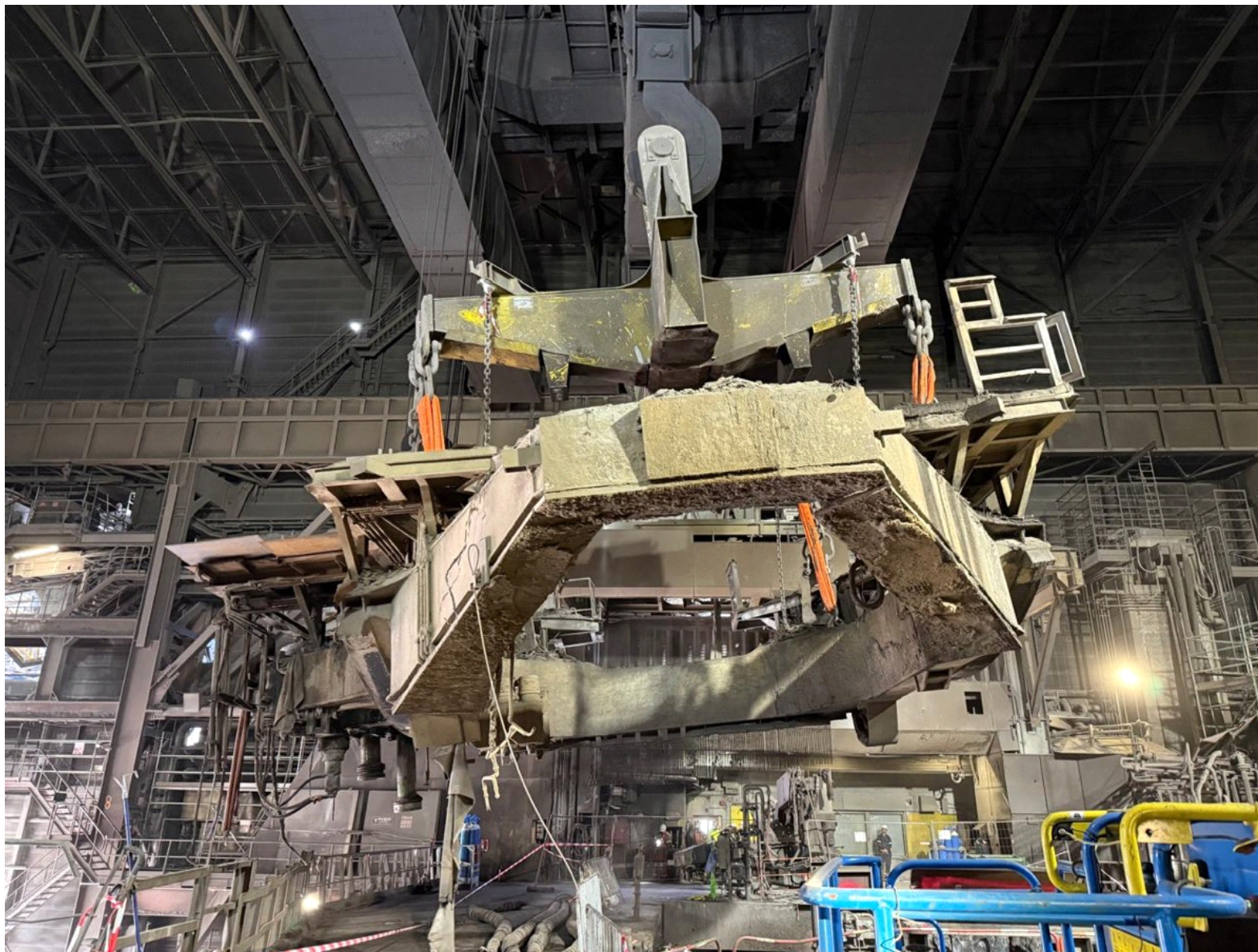


DISMANTLING OF THE FURNACE ROOF





DISMANTLING AND TRANSPORTATION OF THE TILTING PLATFORM



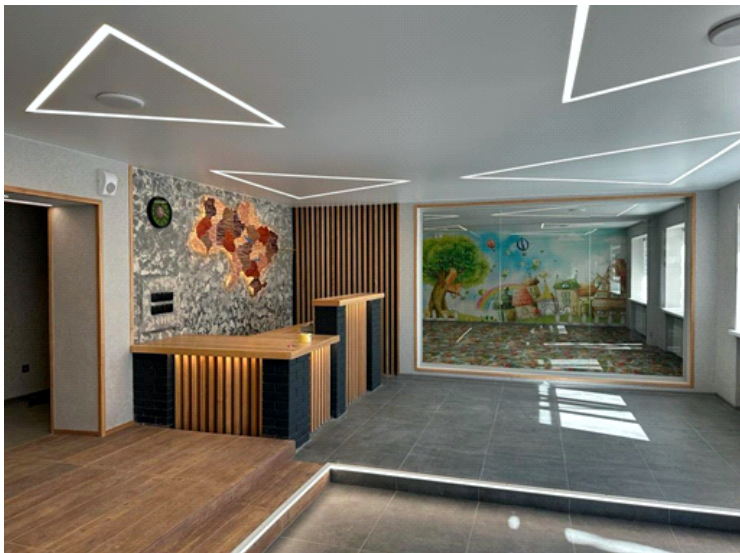


GERMANY STAHLWERK THURINGEN

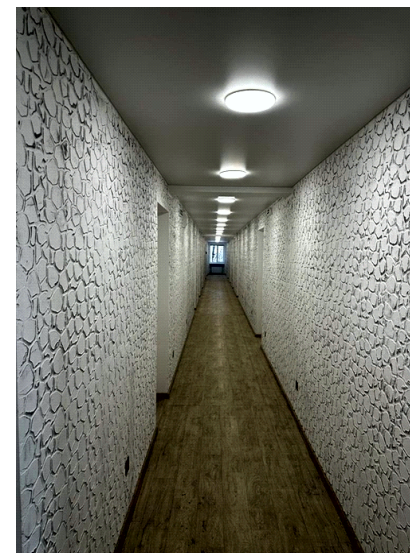
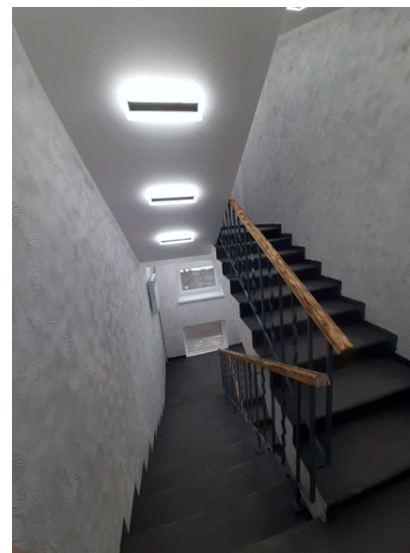
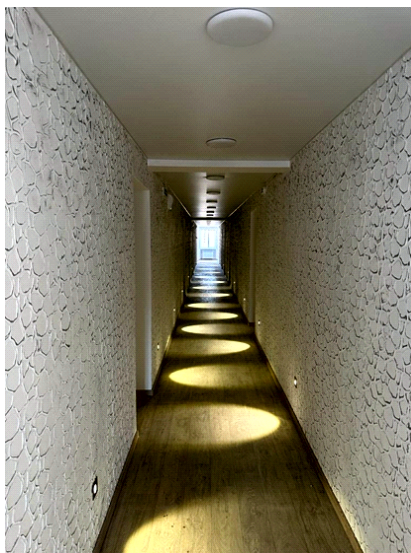
ASSEMBLY AND TRANSPORTATION OF THE VACUUM COVER



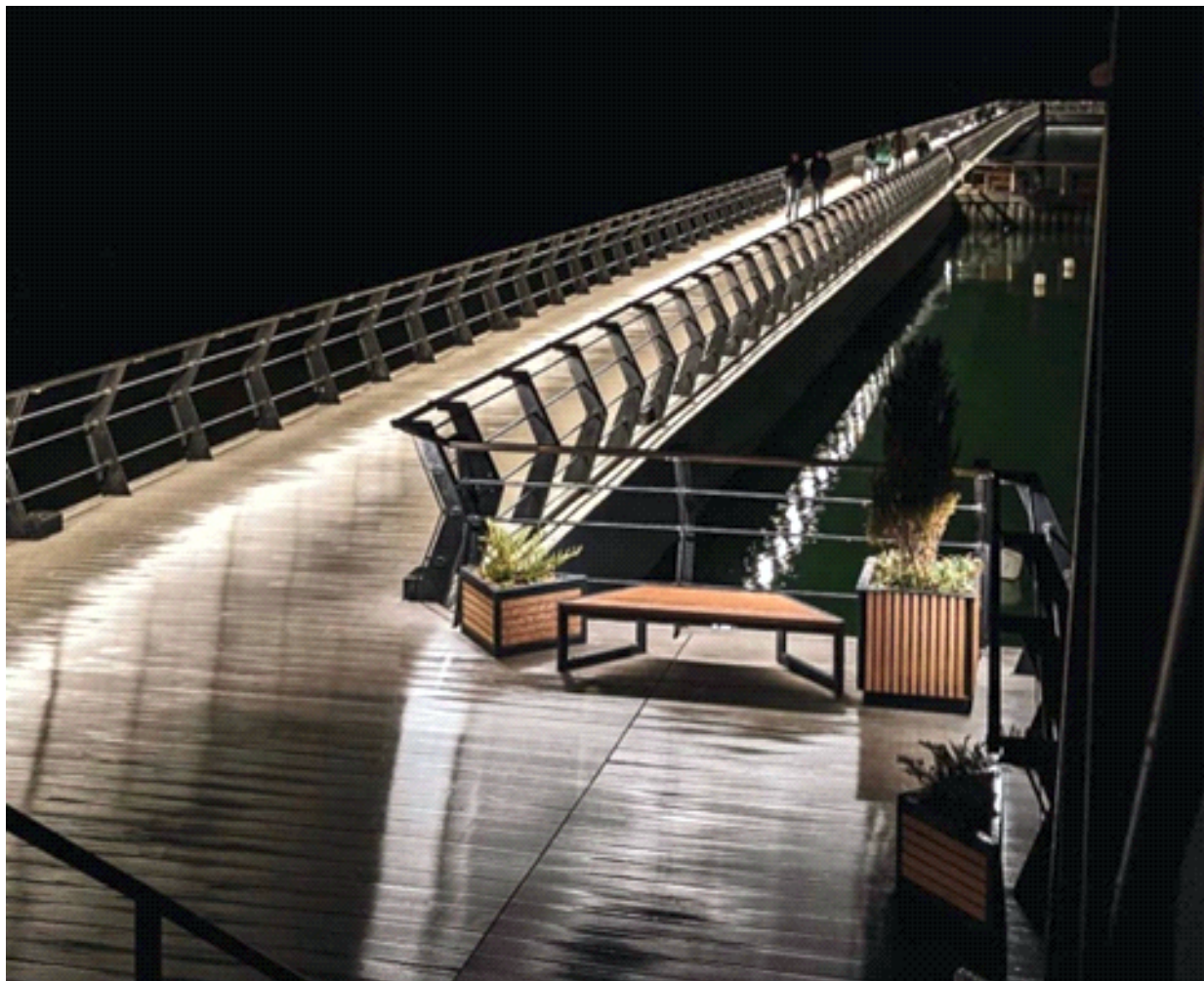
OUR PREVIOUS EXPERIENCE IN GENERAL CONSTRUCTION WORKS



**M A J O R
R E N O V A T I O N
O F T H E
D O R M I T O R Y
B U I L D I N G**



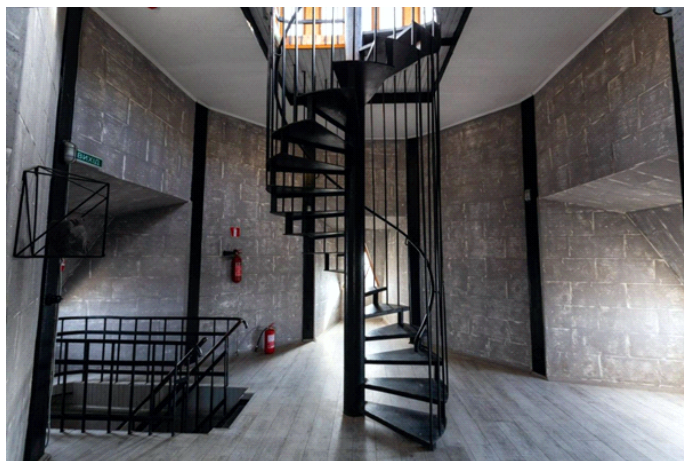
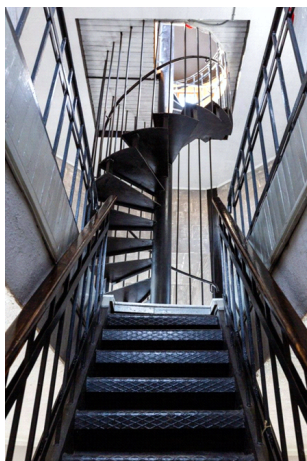
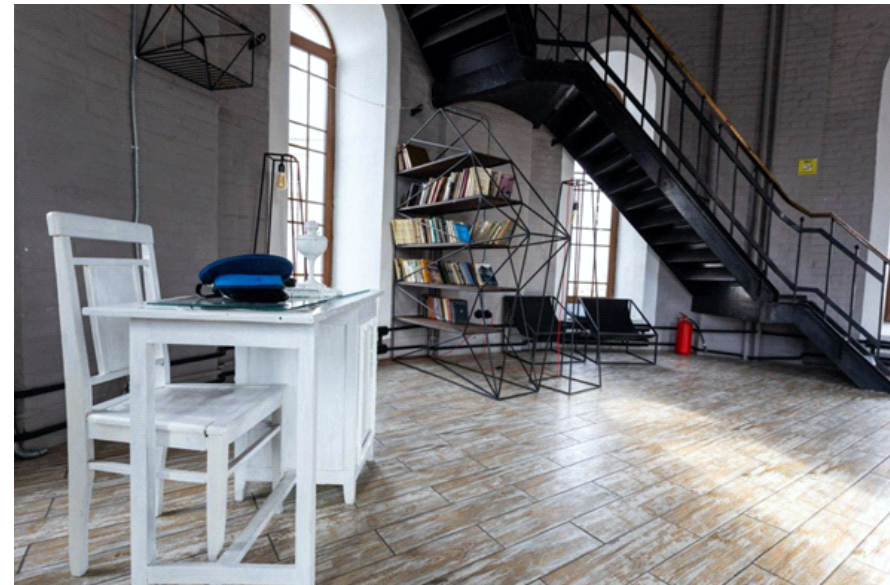
OUR PREVIOUS EXPERIENCE IN GENERAL CONSTRUCTION WORKS



CONSTRUCTION OF A WATER SPORTS COMPLEX



OUR PREVIOUS EXPERIENCE IN GENERAL CONSTRUCTION WORKS



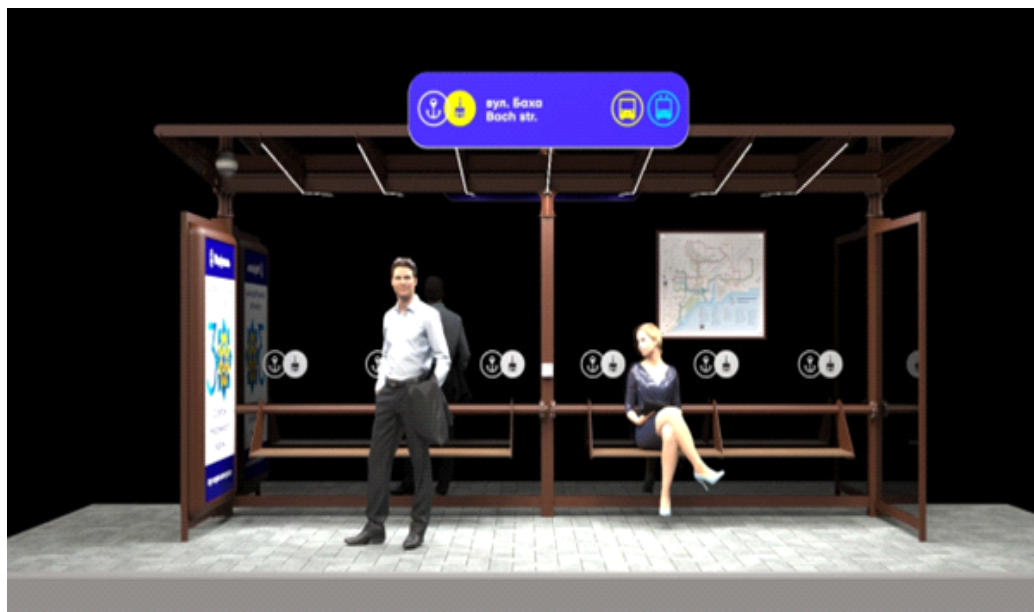
**RECONSTRUCTION
OF THE HISTORIC
SITE "WATER TOWER"**

OUR PREVIOUS EXPERIENCE IN GENERAL CONSTRUCTION WORKS



**CONSTRUCTION OF
OUTPATIENT
CLINIC NO.10
IN MARIUPOL**

OUR PREVIOUS EXPERIENCE IN GENERAL CONSTRUCTION WORKS



**67 WAITING PAVILIONS
WERE MANUFACTURED
AND INSTALLED**



SKRINEX
P O L S K A



SKRINEX POLSKA Sp. z o.o.

SKRINEX-PL.COM